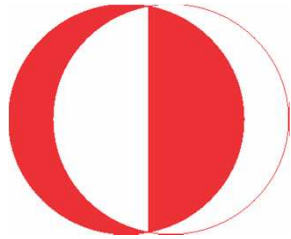


Monitoring Long Term Variability in the Eastern Mediterranean

**Devrim Tezcan, Volodymyr Myroshnychenko
Elif Yılmaz, Barış Salihoğlu, Zahit Uysal,
Ahmet E. Kıdeyş and Dekosim Team**

**Institute of Marine Sciences
Middle East Technical University**



Institute of Marine Sciences, Middle East Technical University (IMS-METU)



- **Physical Oceanography**
- **Chemical Oceanography**
- **Marine Biology and Fisheries**
- **Marine Geology and Geophysics**



Research Vessels

- **Bilim2**
- **Lamas1**
- **Erdemli**



Projects

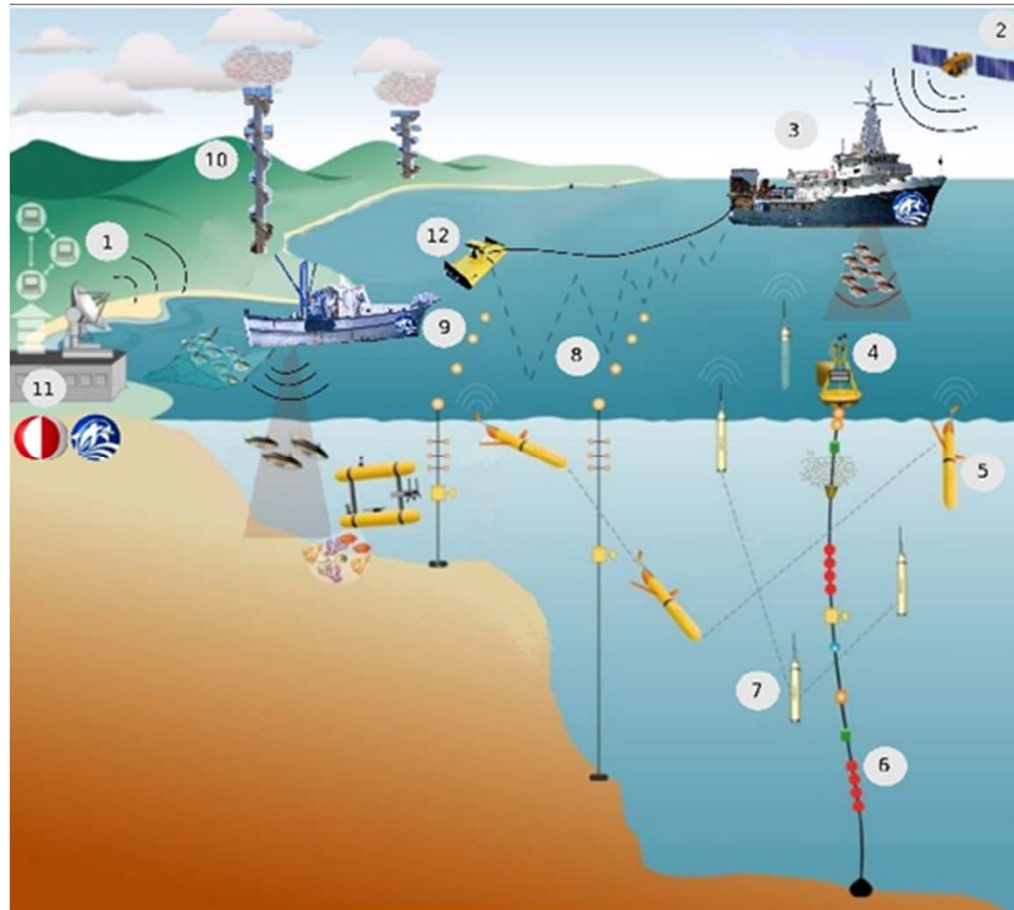
MENAPHY 2013-2014
SEADATANET2 2011-2015
MERMAID 2012-2015
COCONET 2011-2014
PERSEUS 2011-2014
OPEC 2012-2014
ODEMM 2010-2014
MY OCEAN 2009-2013
MEECE 2008-2012
EUROFLEETS 2009-2013
MYTITURK 2011-2012
UPGRADE BSS 2009-2011
SESAME 2006-2011
ECOOP 2007-2010
BLACKSEA MODE 2007-2009
CITYZEN 2008-2011

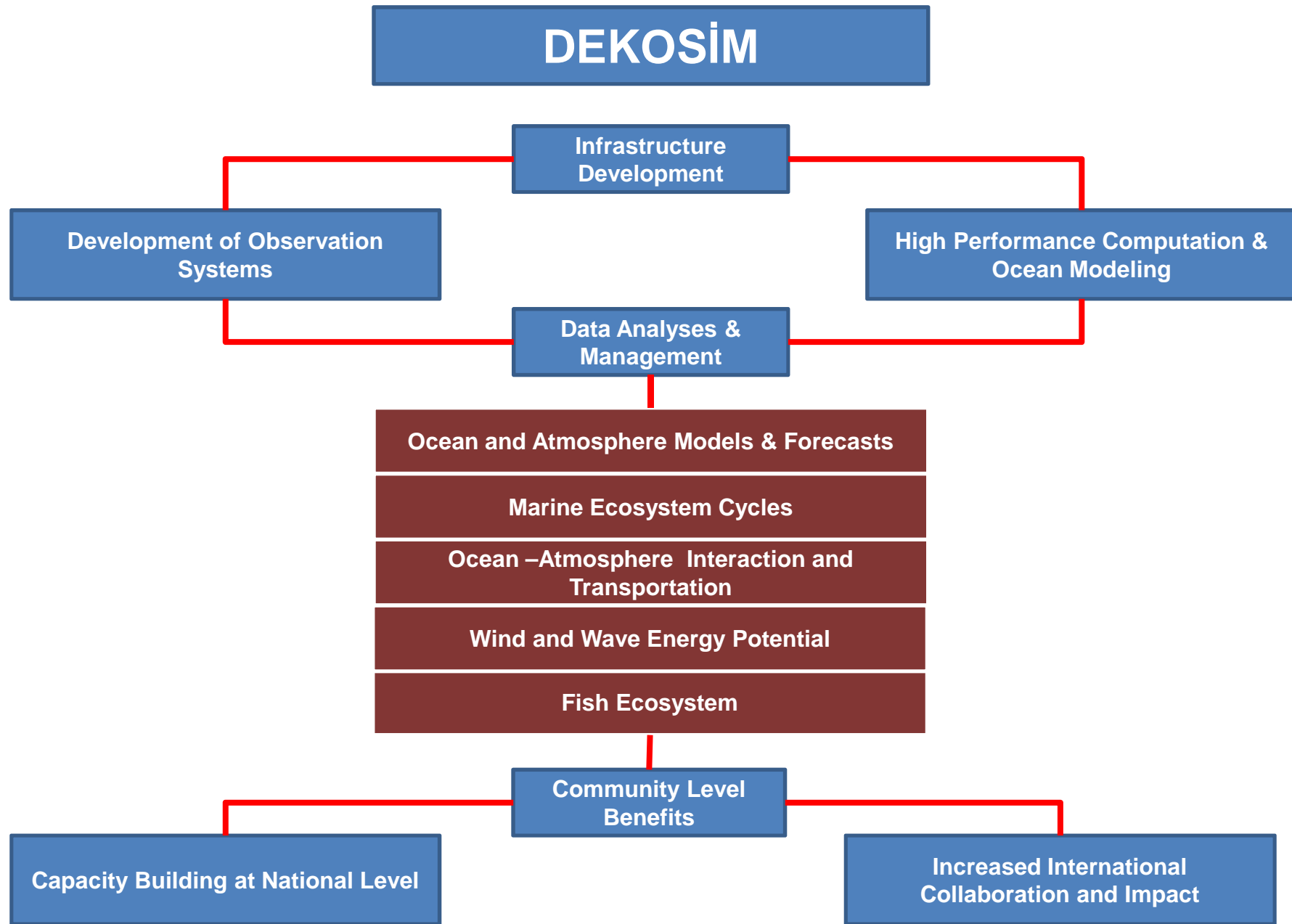
BLACKSEASCENE 2005-2008
SEADATANET 2006-2011
EuroGOOS 2004-2007
MERSEA 2004-2008
ASCABOS 2005-2008
MFSTEP 2003-2006
IASON 2005-2006
MACE 2005-2008
ODBMS 1998-2002
ARENA 2003-2006
UNDP – SGF 2000 – 2003
SEA – SEARCH 2002-2005

DEKOSİM

Deniz Ekosistem ve İklim Araştırmaları Merkezi

Marine Ecosystems And Climate Research Center





Marine Sciences Laboratory

Chemical Oceanography Labs

- Nutrient Chemistry and Pigments
- Marine Pollution
- Atmospheric Chemistry

Marine Biology and Fisheries

- Fisheries
- Molecular Biology and Biotechnology

Marine Geology

- Sedimentology
- Geochemistry



Marine Sciences Laboratory

Chemical Oceanography Laboratories

I) Nutrient Chemistry and Pigments

- Nitrate, phosphate, silicate, ammonium (Auto-analyzer)
- Particulate Carbon, Nitrogen (CHN), Phosphorus (Spectrophotometry)
- Pigment analyses (HPLC)

II) Marine Pollution

- Trace metals (including heavy metals, AAS)
- PAH and Pesticides (GC)

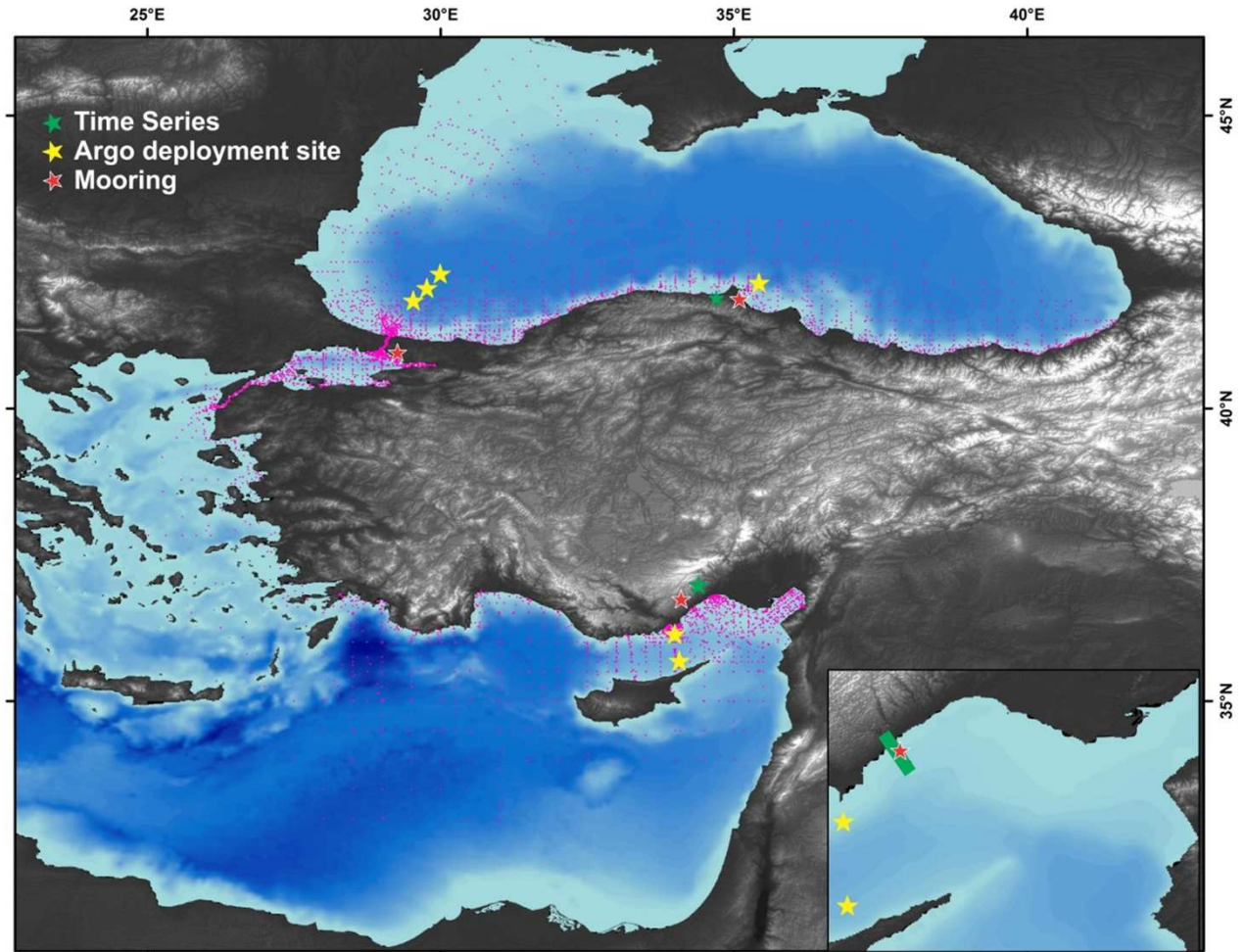
III) Atmospheric Chemistry

- Water-soluble ions, nutrient chemistry, trace metals, real-time gas (O₃, NO_x, SO₂, NH₃, HNO₃, HCl) and aerosol (major ions) measurements
- (IC, Auto-analyzer, including heavy metals, AAS)



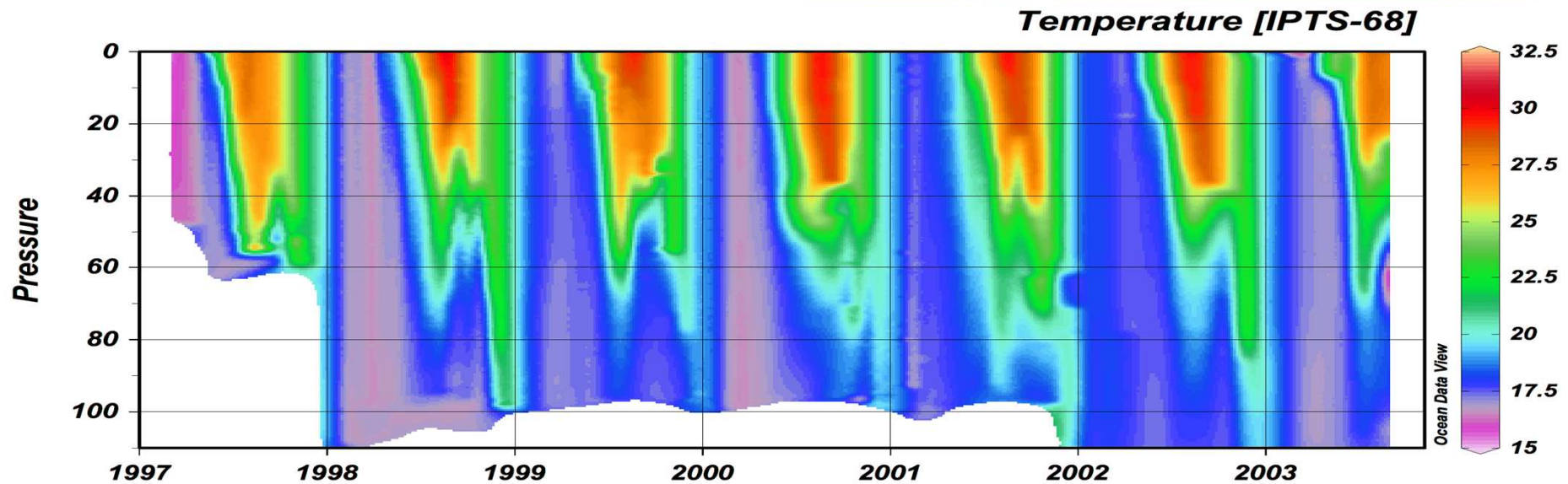
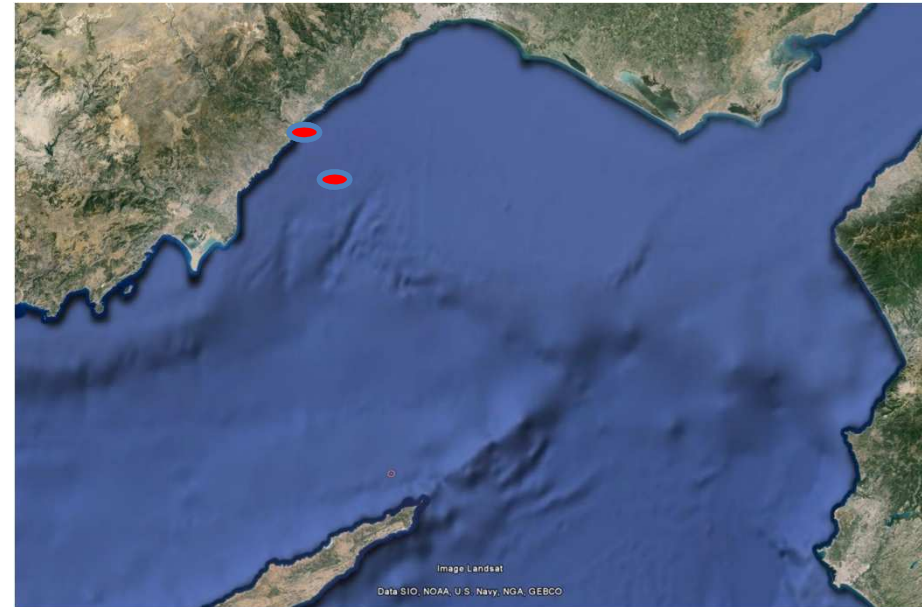
Observation Systems

- Time Series
- Moorings
- Argo floats



Observation Systems

- Erdemli Time Series
 - 1997-2012
 - Two stations at depth:
 - 20 and 200m



Observation Systems

- Erdemli Time Series (ETS)
 - 8 stations at 20, 50, 75, 100, 125, 150, 175 and 200m
 - Weekly
 - Physical parameter
 - Monthly
 - Chemical parameters
 - Biological parameters

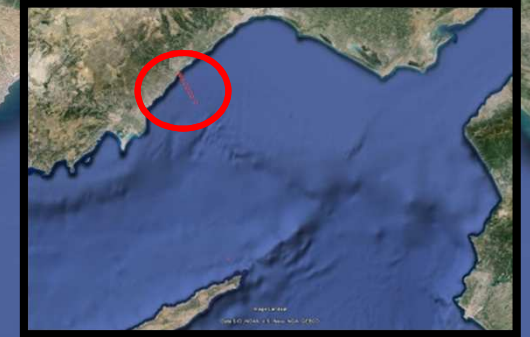
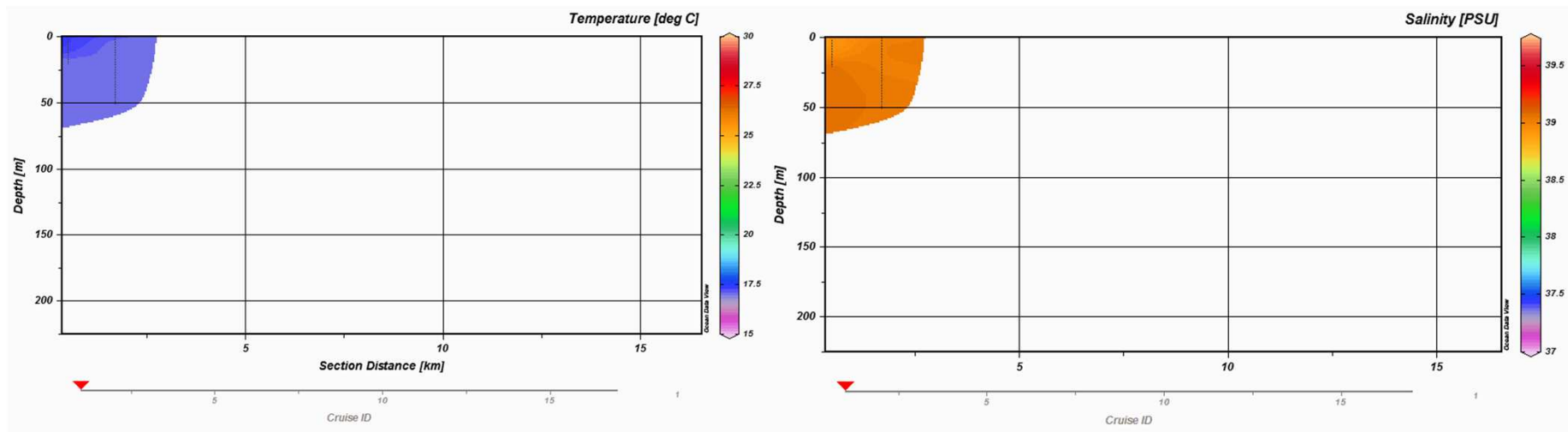


Image Landsat

Data SIO, NOAA, U.S. Navy, NGA, GEBCO

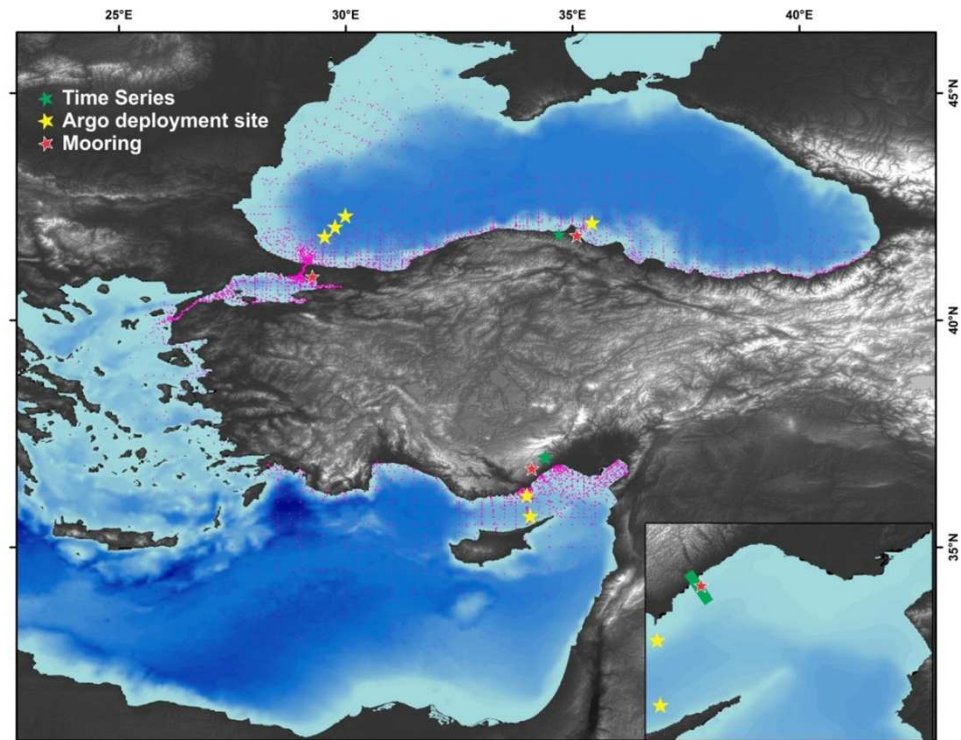
Observation Systems

- Erdemli Time Series
 - Temp & Sal sections are available at dekosim.ims.metu.edu.tr



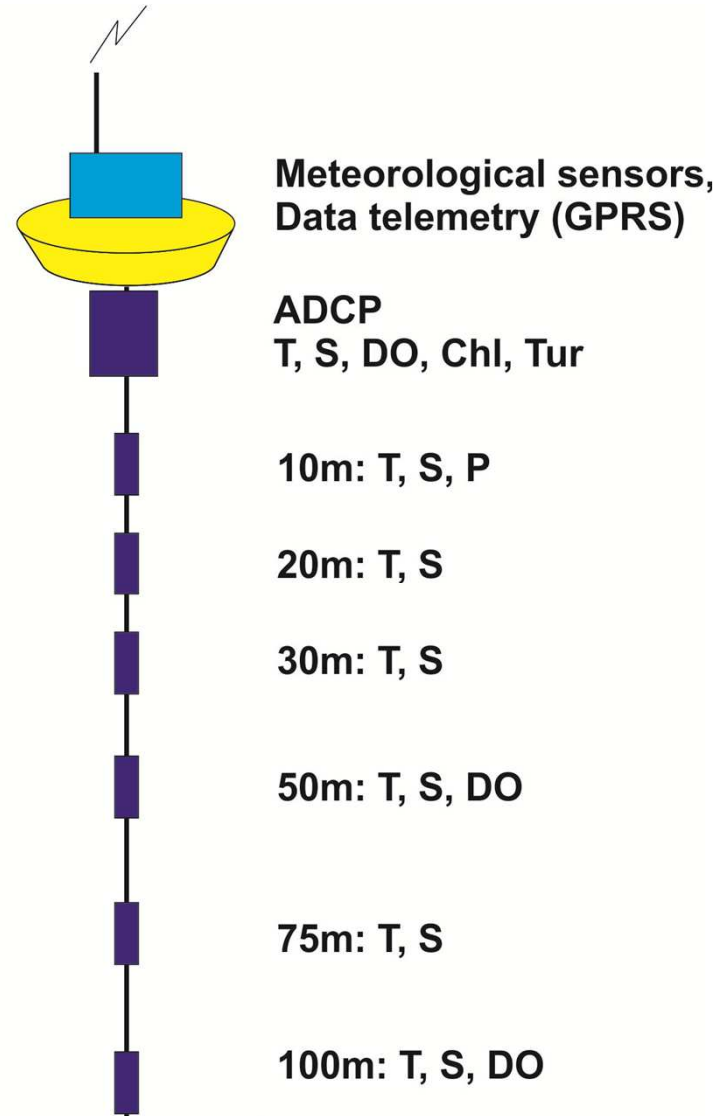
Observation Systems

- Time Series: National projects
 - Erdemli
 - Sinop / Trabzon
 - Northern Cyprus
- Technical assistance
- Lab facilities



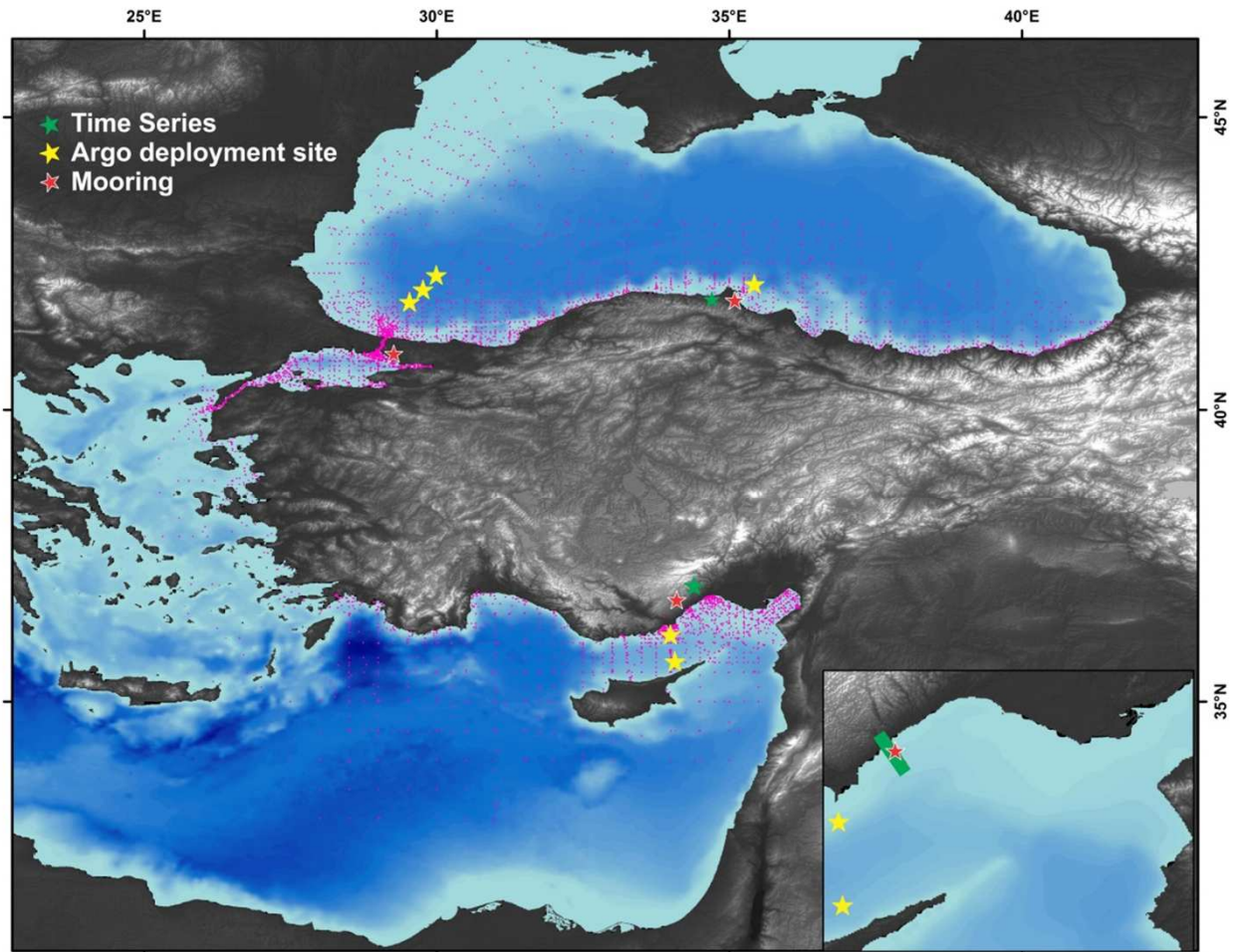
Observation Systems

- Two Moorings
 - Black Sea
 - Mediterranean
- Turkish Met Office
- Seabird sensors
- Near real time data



Observation Systems

- Moorings
 - Black Sea
 - Mediterranean



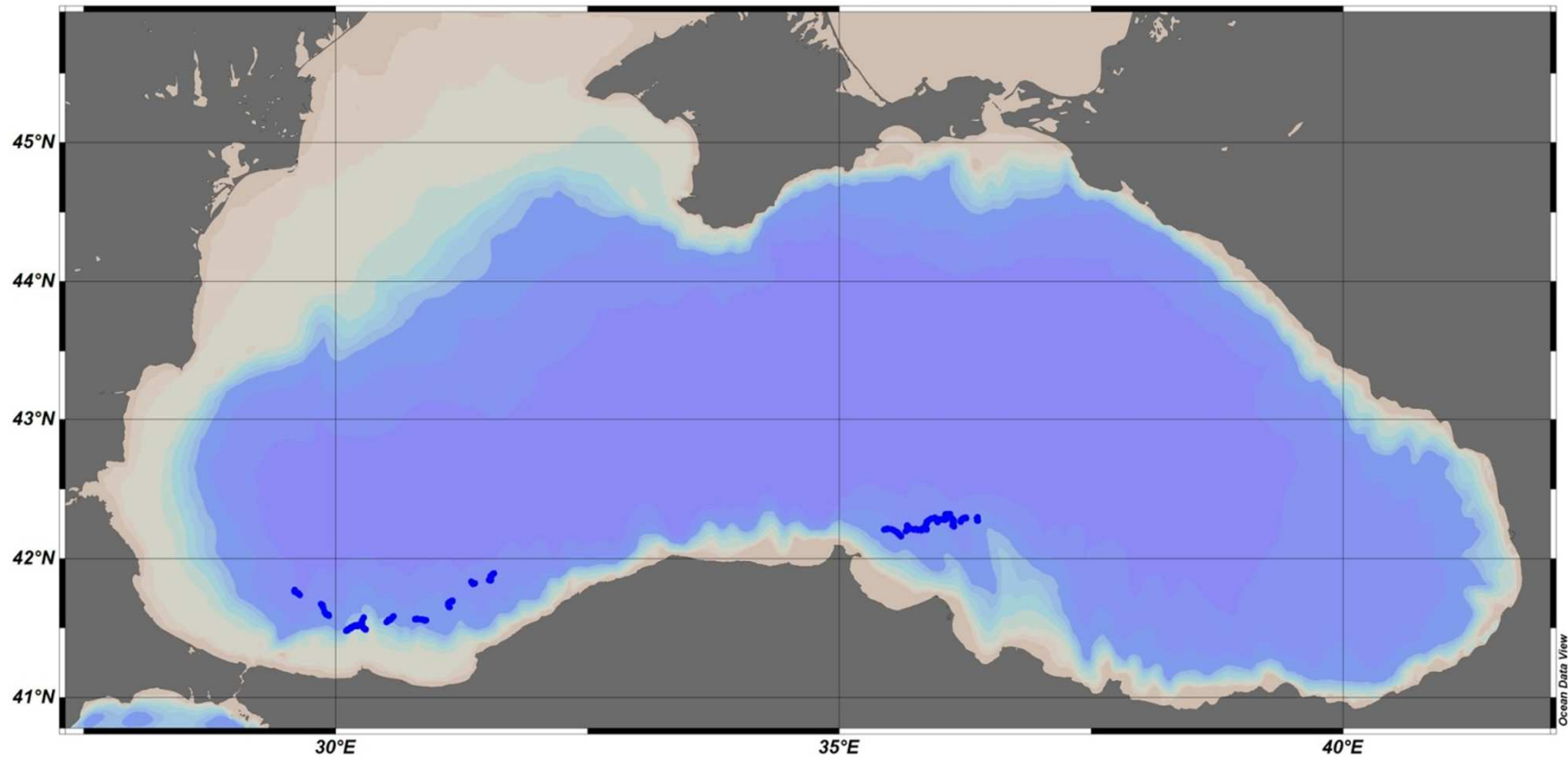
Observation Systems

- Argo: 6 Argo floats
 - NKE Provor_DO and Provor_DO_I
 - 4 provor with argos tranmission
 - 2 provor with Iridium transmission
 - Aandrea dissolved oxygen sensor: optode 4330



Observation Systems

- 2 argo floats in Black Sea



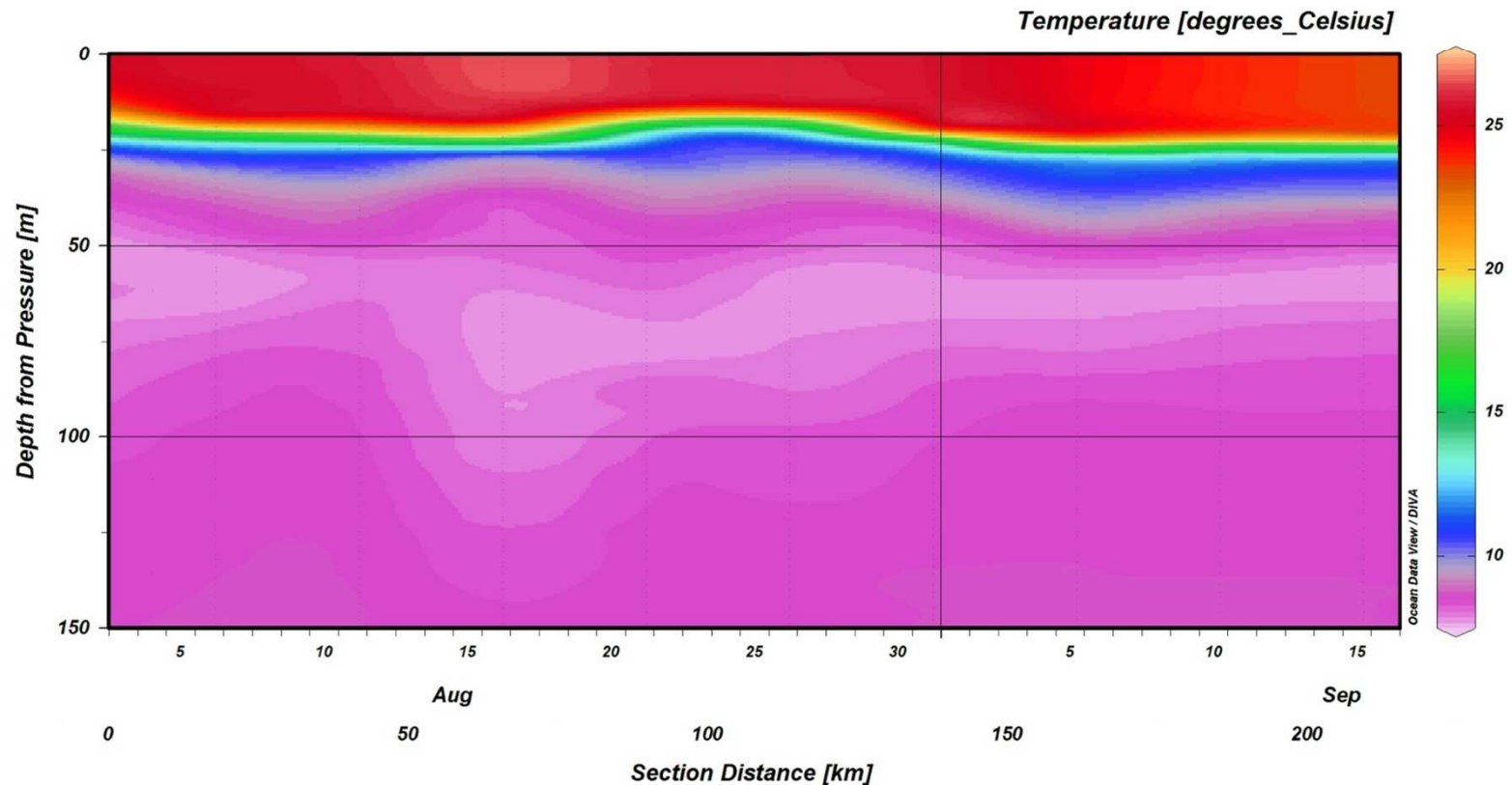
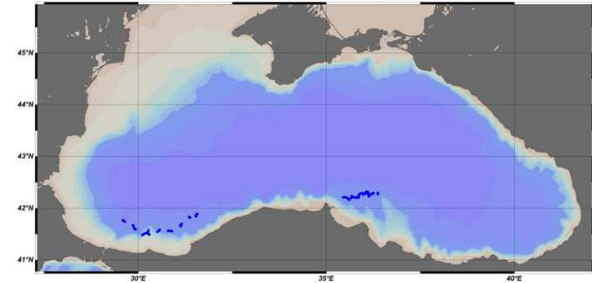
Observation Systems

- Black Sea – 2 Argo floats
 - Parking depths are 200 and 700
 - 2 m resolution above 200m, 25 m between 200-500m
50 m below 700 m
 - 5 days cycle
 - The aim is to investigate the variability of thermohaline current structure and mesoscale features as well as oxygen content across the oxycline, Suboxic Layer, and anoxic layer.
 - Turkey is a candidate member to the EURO-Argo program



Observation Systems

- Argo: Argo_Istanbul_1



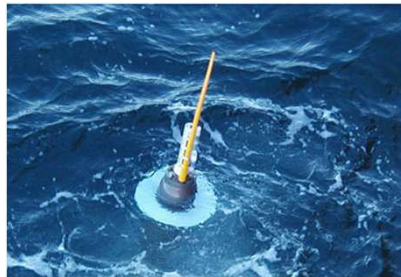
IMS Database



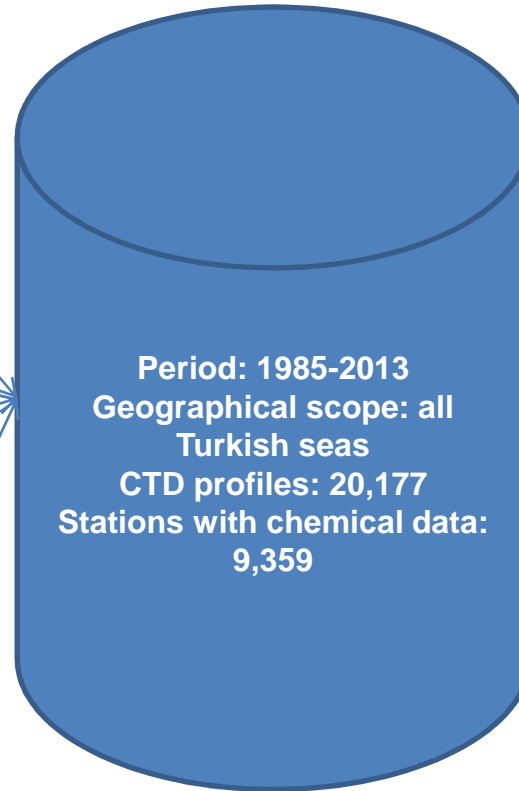
RV cruises

Monitoring data

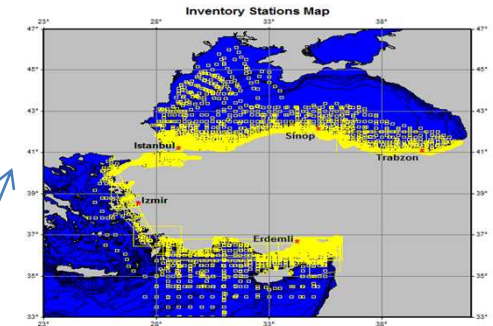
- Time Series
- Moorings



ARGO floats

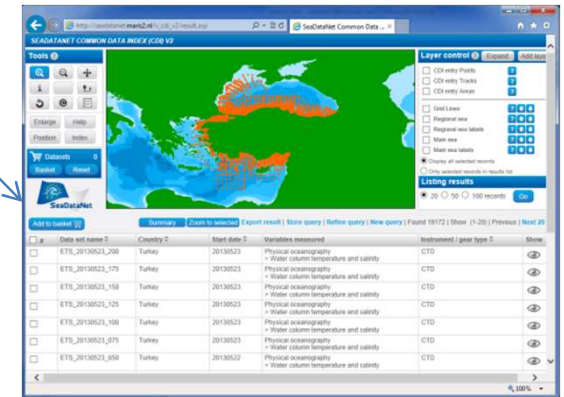


IMS Oceanographic Data Inventory

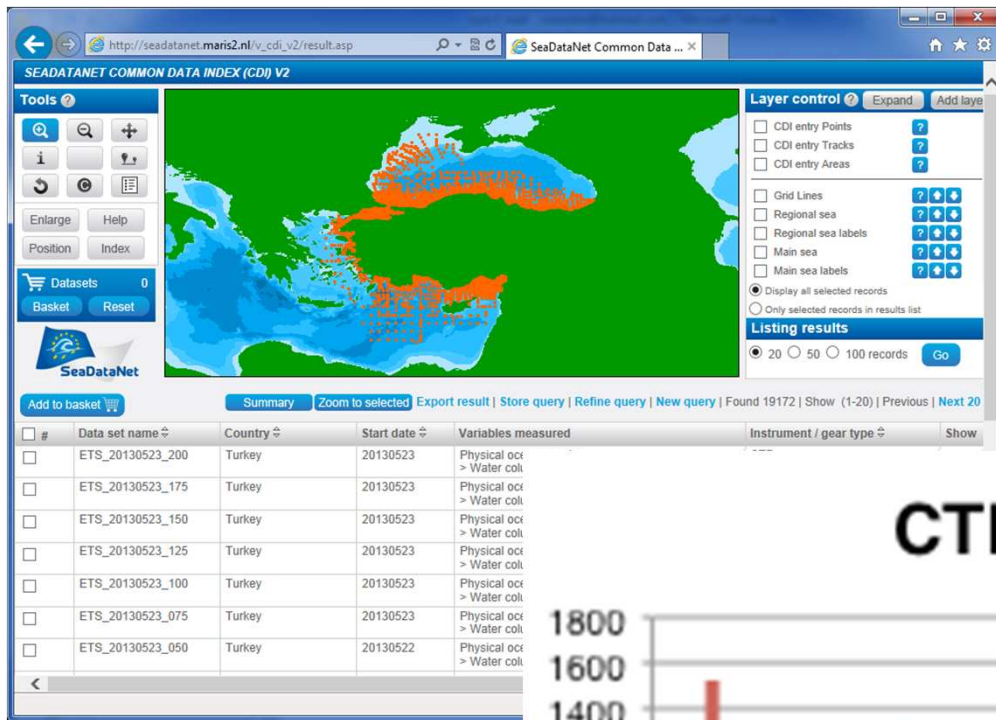


www.ims.metu.edu.tr/ims_inventory/

SeaDataNet CDI

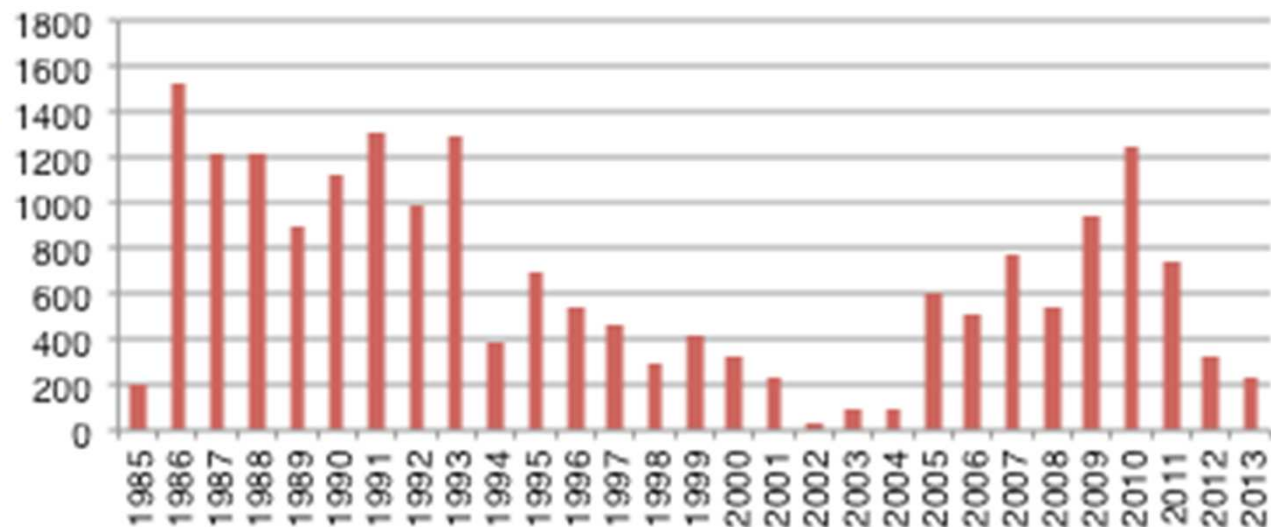


IMS METU CTD data in SDN CDI database



Total **19,172**
stations/profiles

CTD Profiles/Year

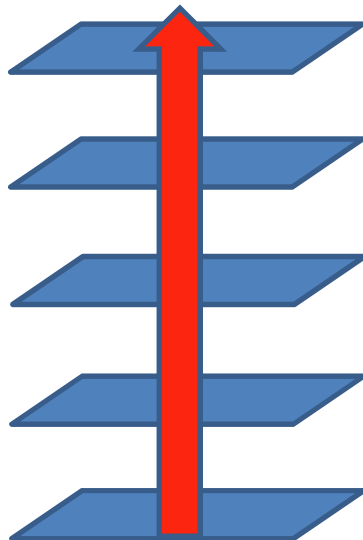


IMS METU WebGIS server



- ArcGIS for Desktop Version 10.2
- ArcGIS for Server

I
N
T
E
G
R
A
T
I
O
N



Ecosystem model outputs

Observations data from the database (physical, chemical, bio)

Thematic OGC WMS services: e.g. EMODNET layers for hydrography, geology etc.

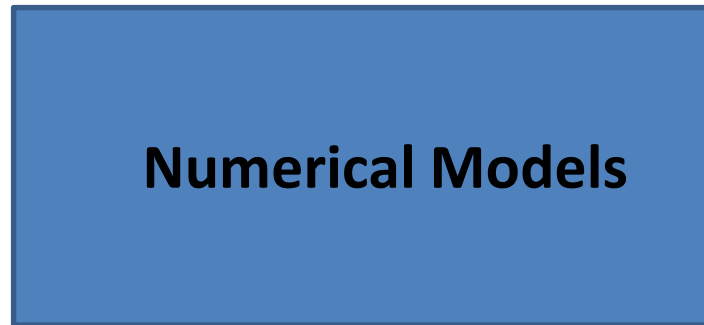
Specific GIS layers: MPA, Hot Spots etc.

Standard GIS layers: landscape, elevations, rivers, coastline



DEKOSIM SERVICES

Observational Data and models



Data Assimilation



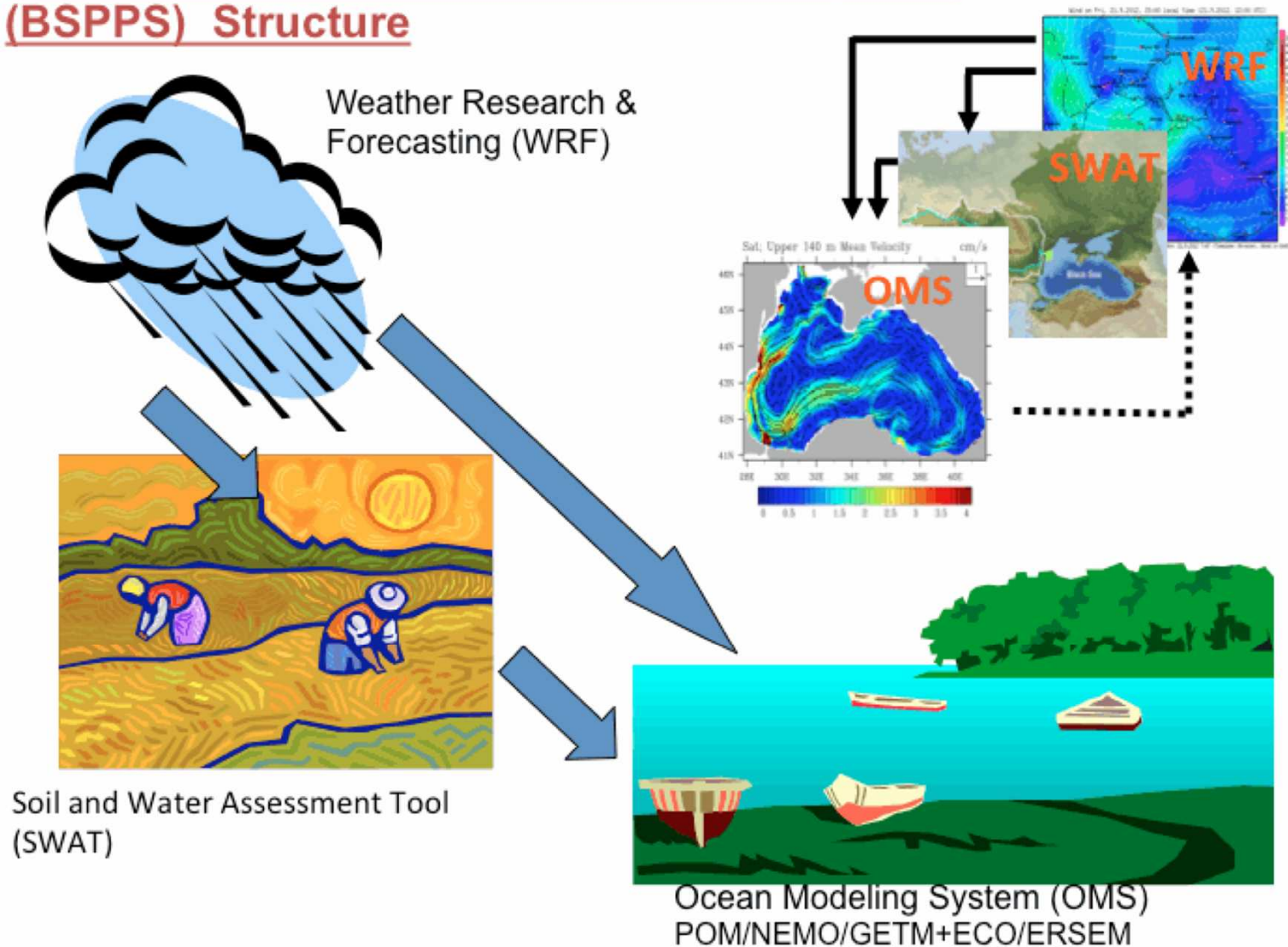
Integrated products



Online Maps

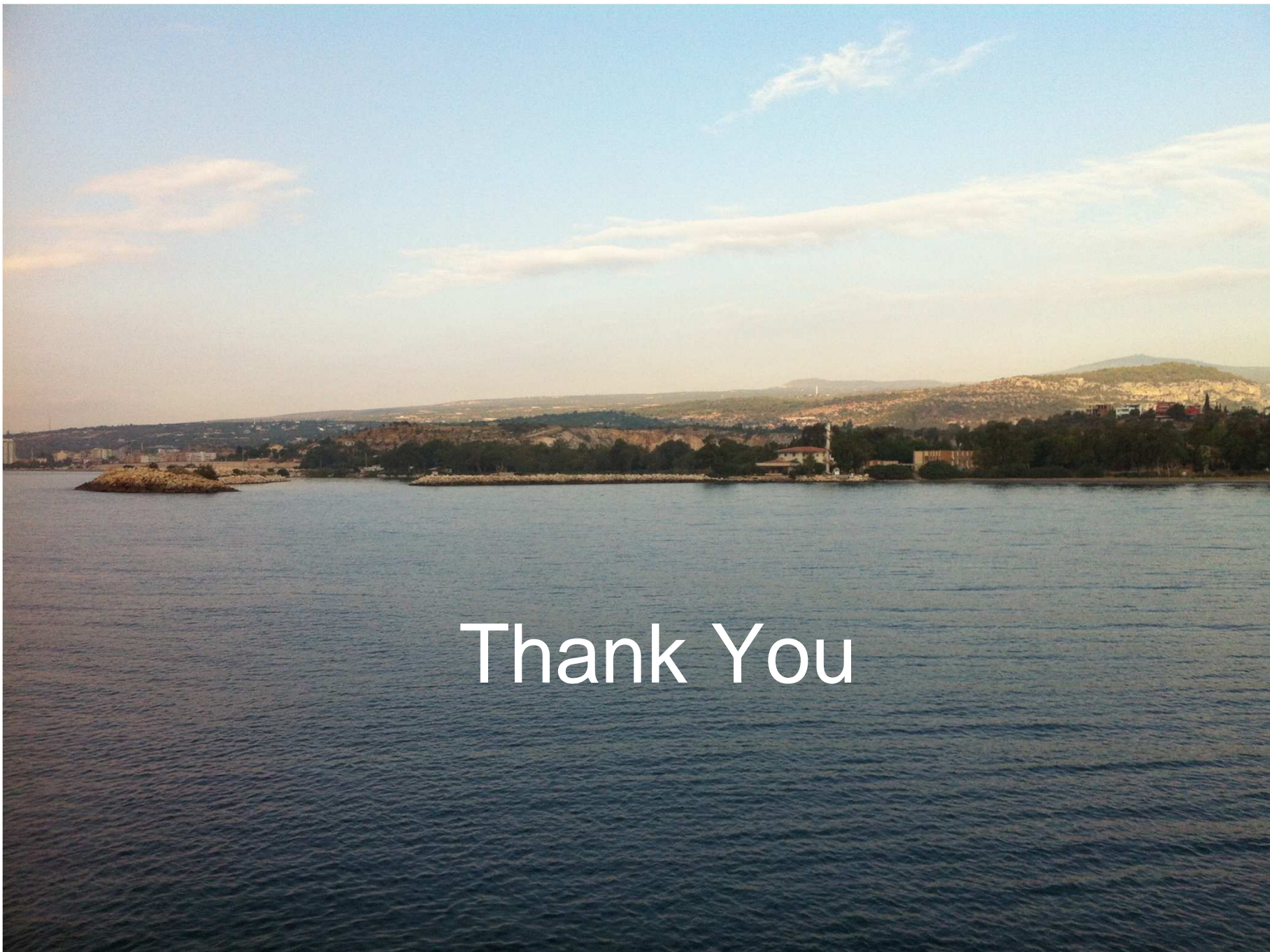


Black Sea Protection and Prediction System (BSPPS) Structure



Contact: Dr. Barış Salihoğlu - baris@ims.metu.edu.tr





Thank You