

Data systems supporting marine protected area management in Parks & Wildlife Finland

Lasse Kurvinen

Metsähallitus Parks & Wildlife Finland (lasse.kurvinen@metsa.fi)

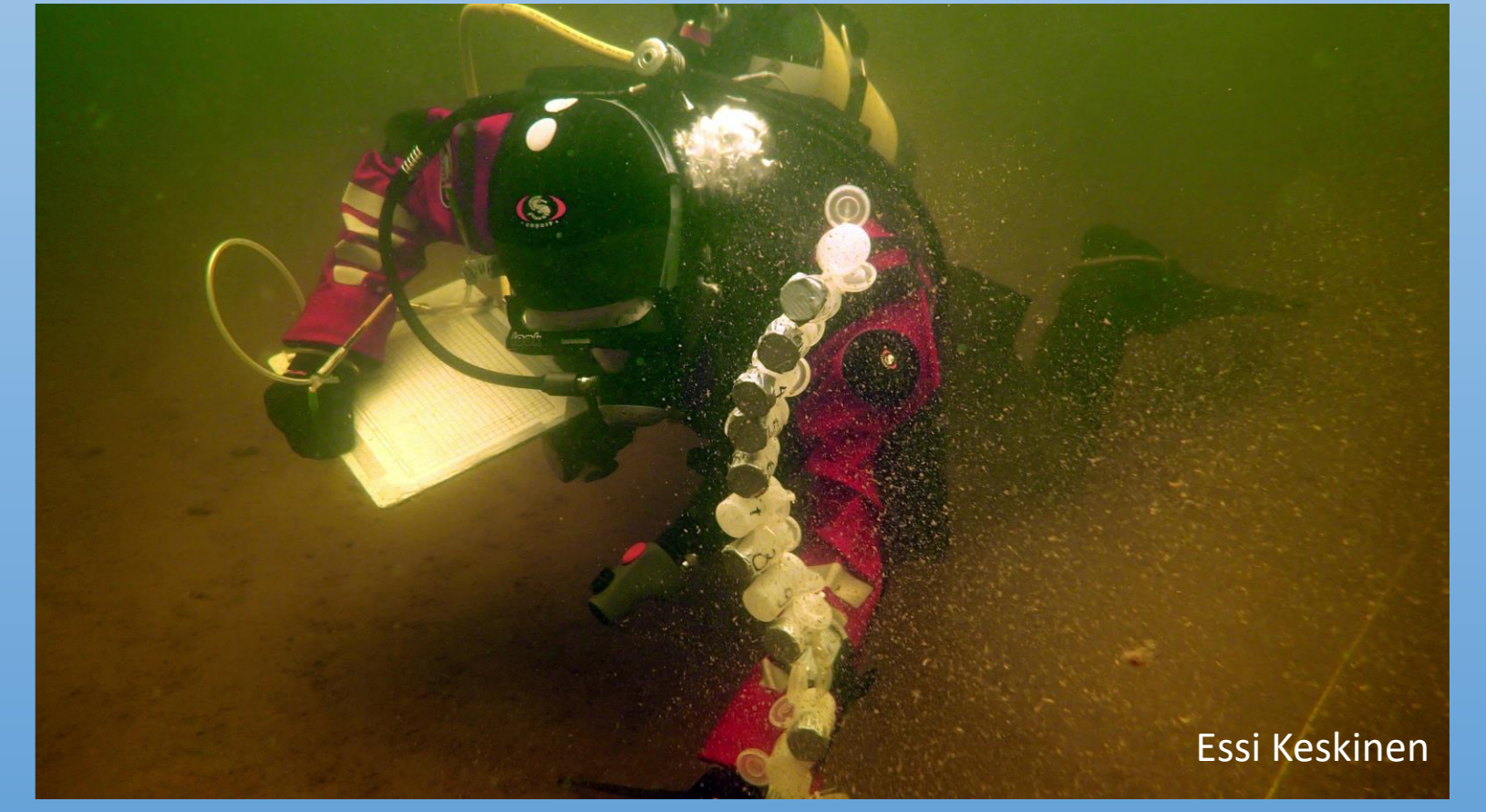
Parks & Wildlife Finland is, among other tasks, responsible for the management of state owned protected areas, including several marine protected areas (MPAs). Parks & Wildlife Finland manage over 50% of Finland's MPA areal, including National Parks, N2000-, HELCOM MPA- and Ramsar-sites, as well as other protected areas.

In order to effectively manage these areas several kinds of data are needed and the data used should be of good quality, up to date and easily accessible.

Data collection

The VELMU inventory program (<http://paikkatieto.ymparisto.fi/velmu/>), and related projects, has been mapping the Finnish sea areas since 2004. With more than 160 000 sampling points to date, knowledge of the underwater nature in Finland has increased substantially.

This information can be used to manage protected areas in a way that also takes the underwater values into account.



Essi Keskinen



Essi Keskinen

ULJAS - Integrated information system

Parks & Wildlife Finland has in the recent years moved towards a concentrated data management system, to support the management of various types of protected areas. The system consists of several sub-parts (applications) which are integrated in a common framework. The sub-parts are custom made ArcMap based applications, designed for their specific purpose.

These applications are built in a way that makes it possible for information to move between the different parts, with the aim to obtain relevant information when e.g. managing and planning MPAs.

LajiGis

Collected data on species observations (with connected information on e.g. depth) is managed via this application.

Aside from simply storing the data this application can also be used to plan future mapping, feeding back to data collection.

If e.g. a protected species has been observed in an area, this application can be used to plan and follow up conservation measures of the occurrences.

SAKTI

Information on biotopes and habitats is managed via this application. At this moment the main focus is on Habitat Directive habitats. Aside from the occurrences, information on e.g. the state of the occurrence can be stored. This information is used for e.g. directive reporting. Planning of restoration measures for occurrences is possible.

Still partly under construction for the marine parts.

SASS – Management of Protected Areas

This is the main application for protected area management. The application is used to make management plans, N2000-site evaluations, among other things.

The user gets information on e.g. the occurrence of threatened species and habitats from LajiGis and SAKTI applications.

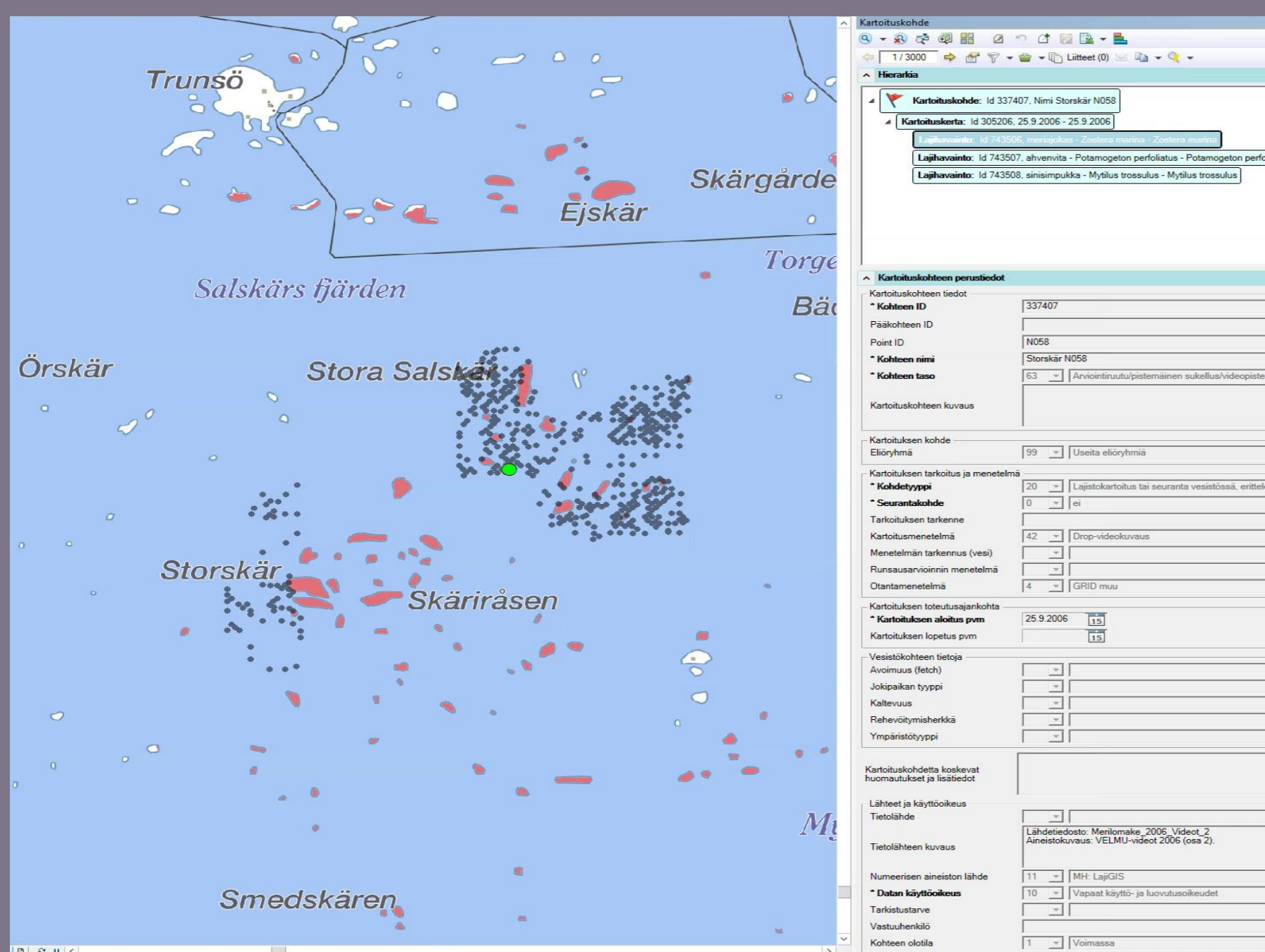
The application is also used to compile yearly plans of what kind of work (inventories, restoration) will be done in the different protected areas in the coming years.

SATJ – Protected Areas

Background information on protected areas. Type of area, year of establishment etc.

Threats and pressures

No separate application at the moment.



Drop-video observations in LajiGis

