

A new software for management of geological and biological samples

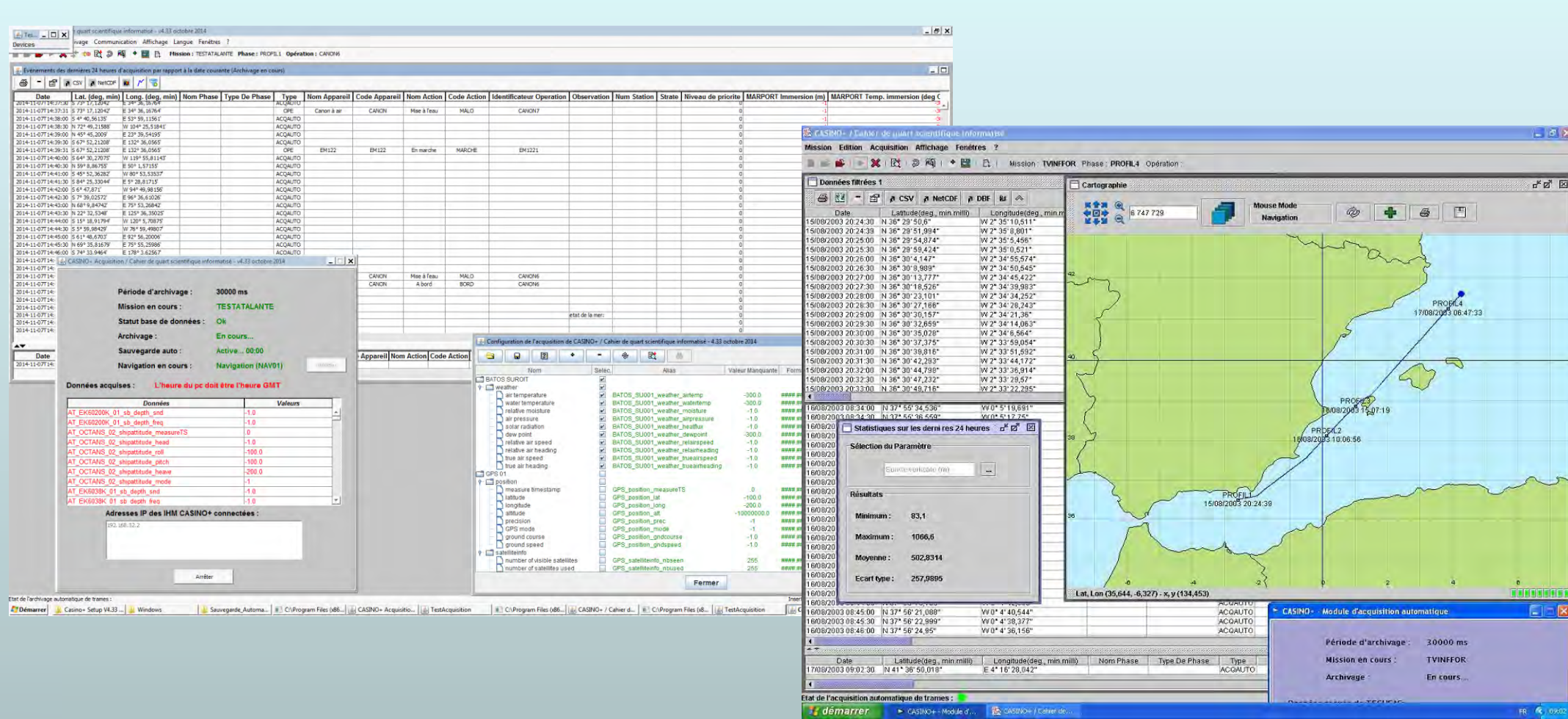


In the aim of managing marine geological and biological samples and related analyses in an unique system, IFREMER has designed a new data base : **Biology and GeOlogy Ocean Database (BIGOOD)** and has developed new software : **SEALOG** (on board) and **ARCHIMEDE** (on land). The main objectives of this project are:

- improve archiving and maintenance of marine samples collected during oceanographic cruises;
- make accessible the available information (samples and related analyses) to the scientific community;
- rationalise and optimise the logistic for cruise preparation for the French and international community.

Casino +/Mimosa/Adelie

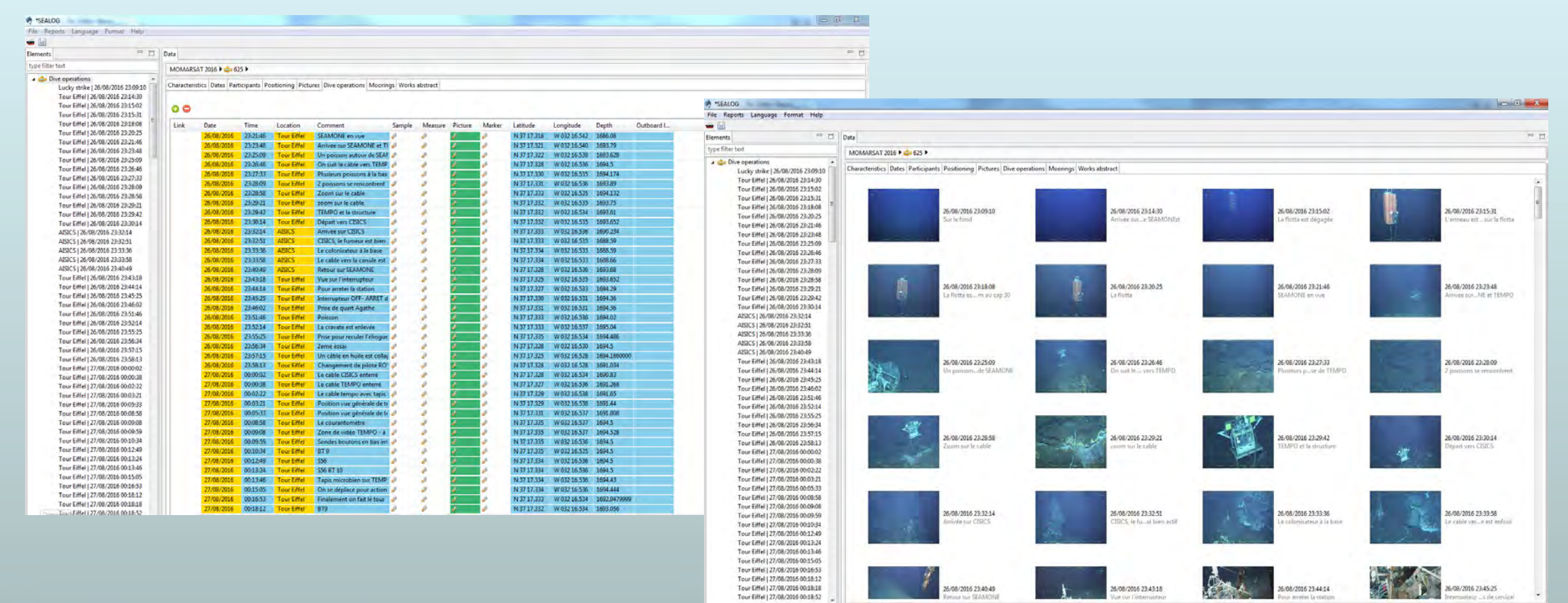
Recording of surface and submarine operations



Real time

SEALOG software

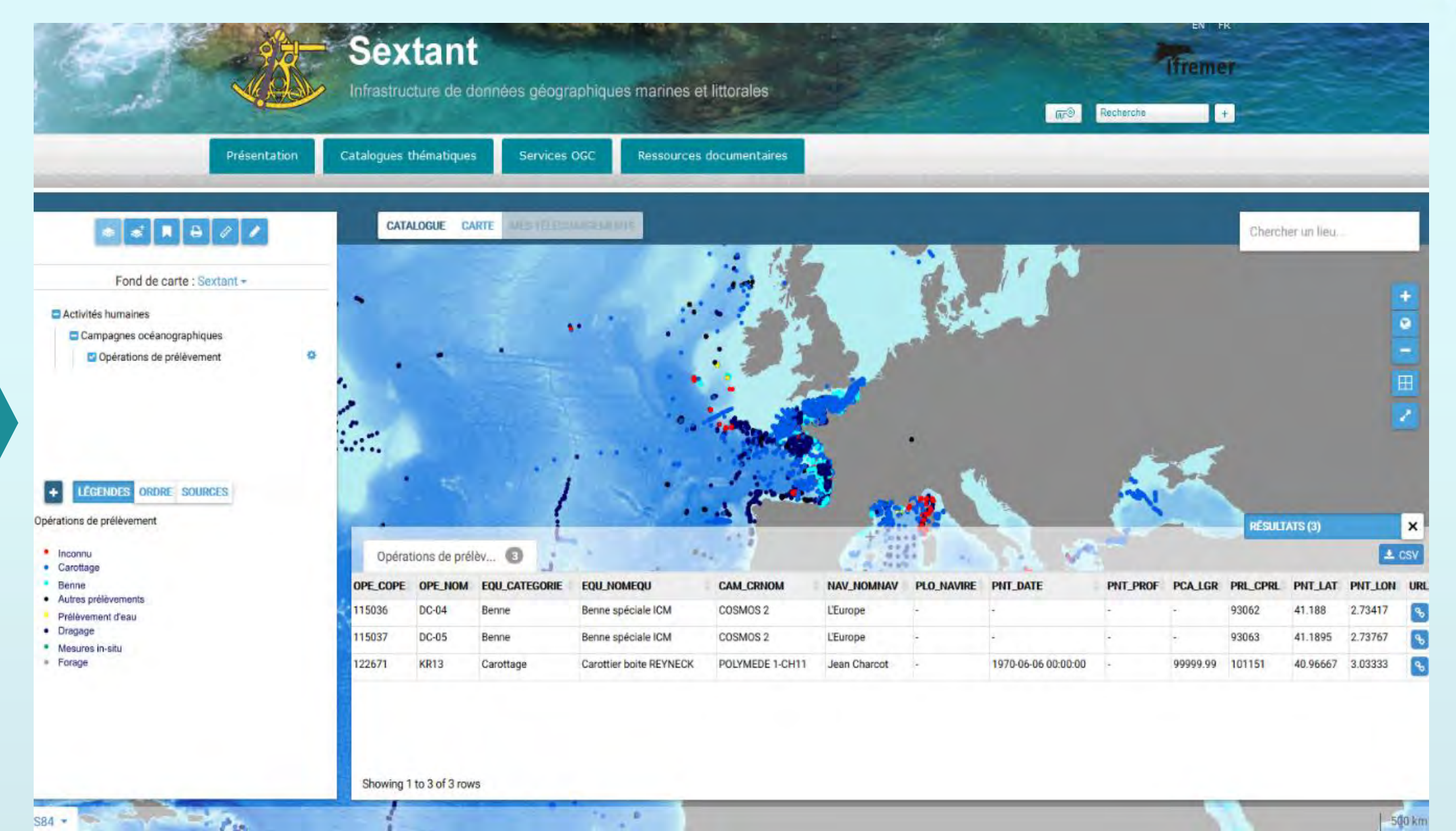
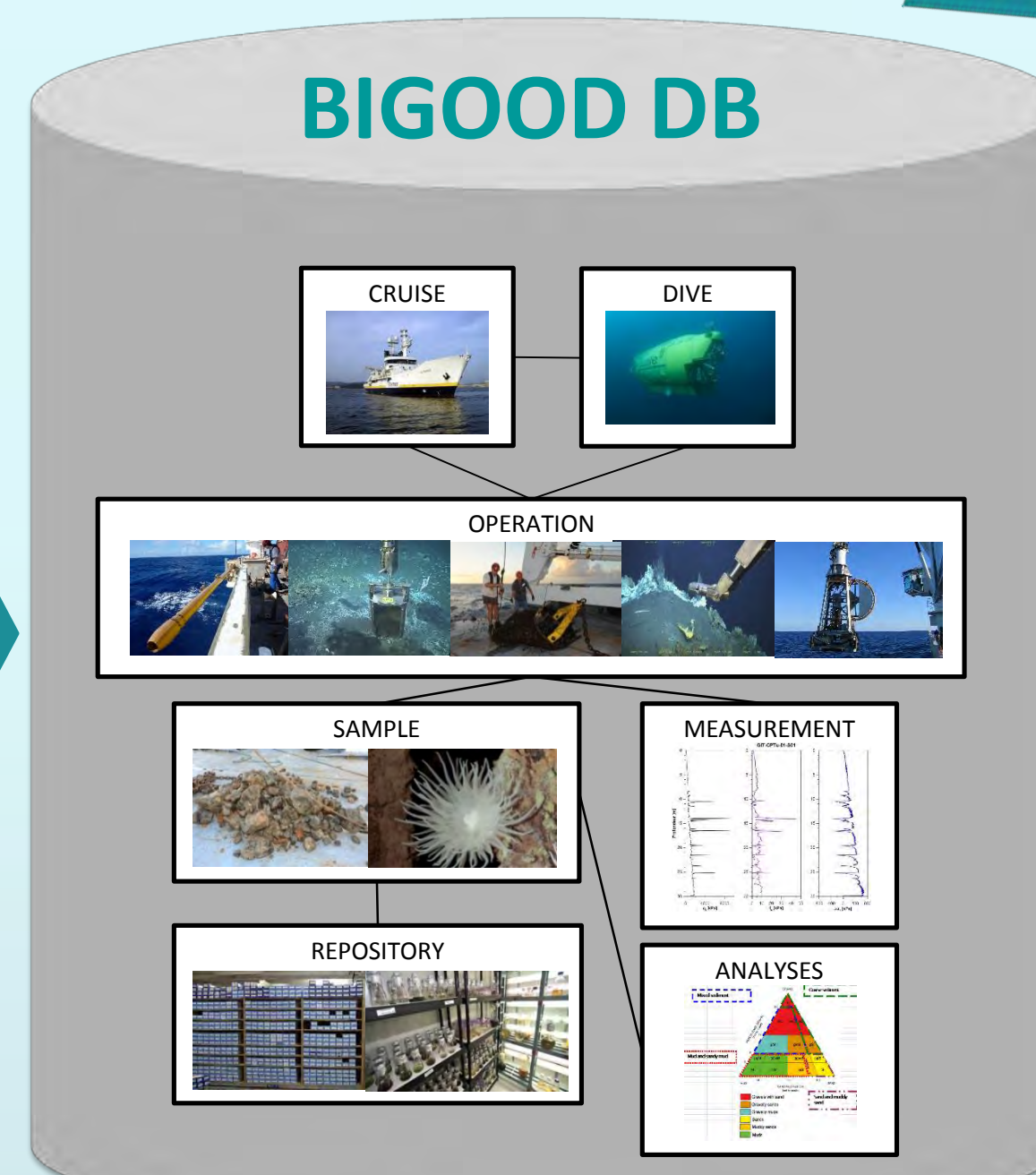
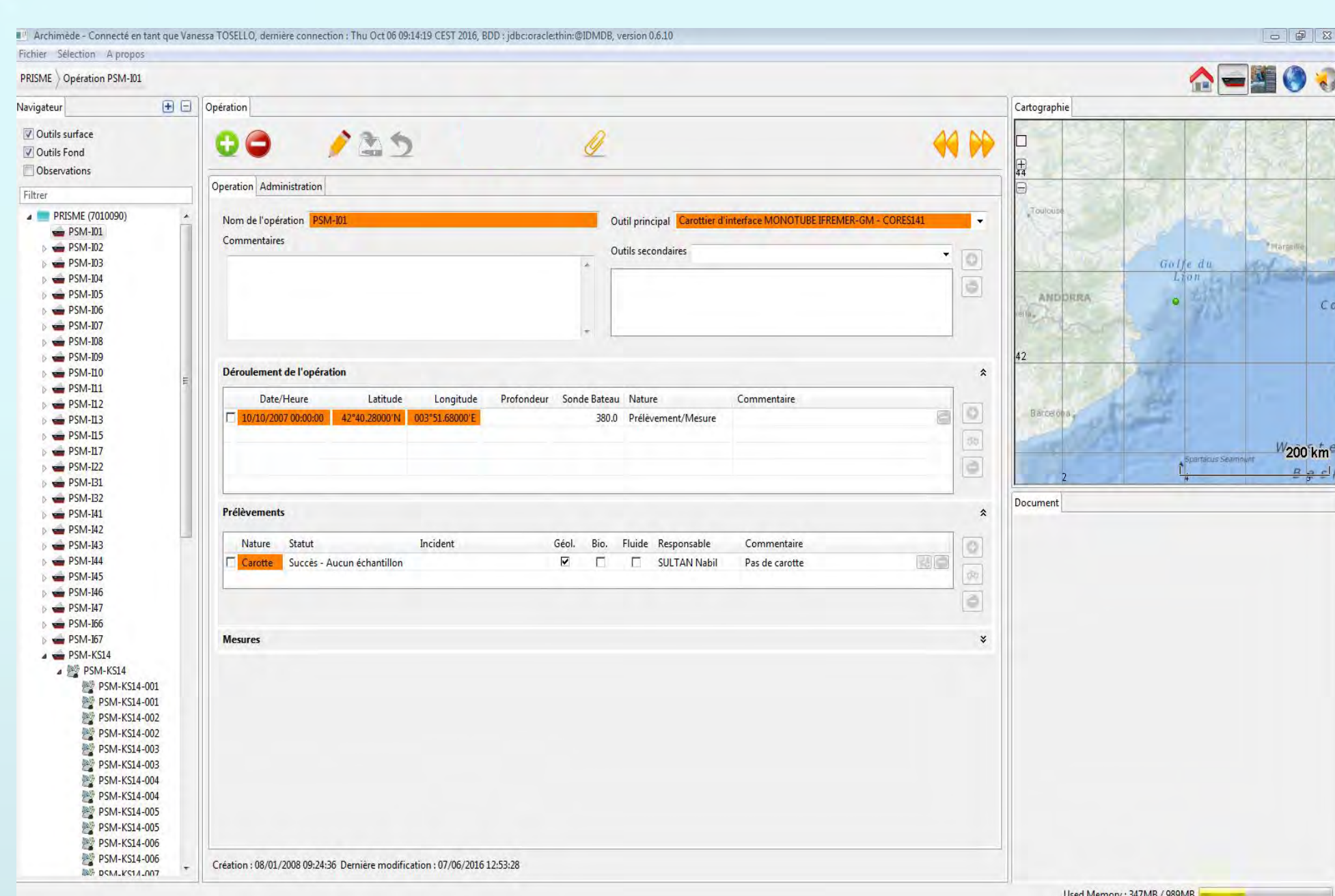
Recording and reporting measurements and samples from cruises, dives and moorings operated by biologists and geologists



Delayed mode

Import during the cruise

Import after the cruise



(1)

ARCHIMEDE software

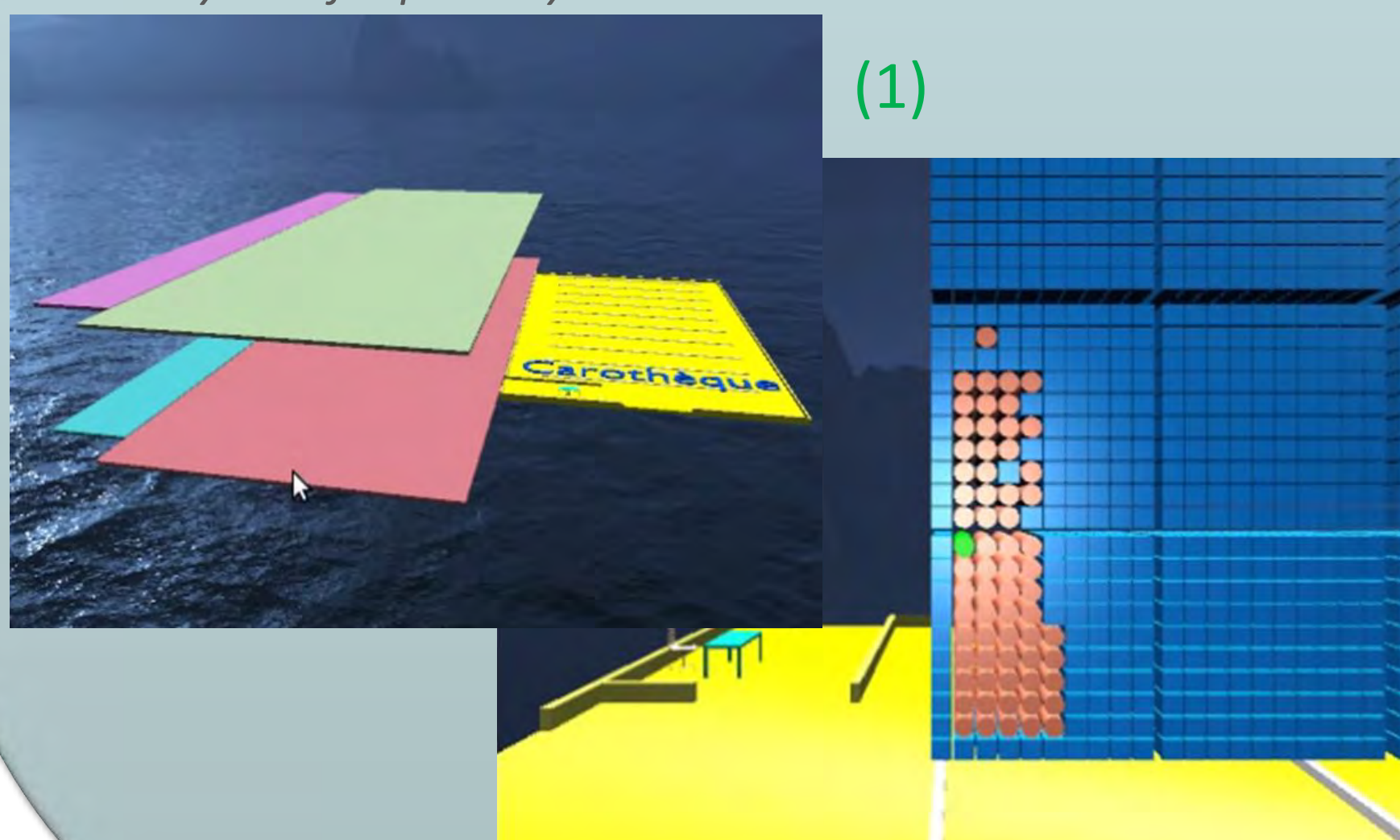
Graphical user interface connected to the BIGOOD database, used **in the lab**

- ❖ Metadata and data updates on operations, dives, samples
 - Management of sample physical locations using 3D plans of the repository (1)
 - Generation of labels including QR code and bar code (2)
 - Track of movements (transfers, loans...)
- ❖ Visual display and query
- ❖ Metadata import and export

Web Access

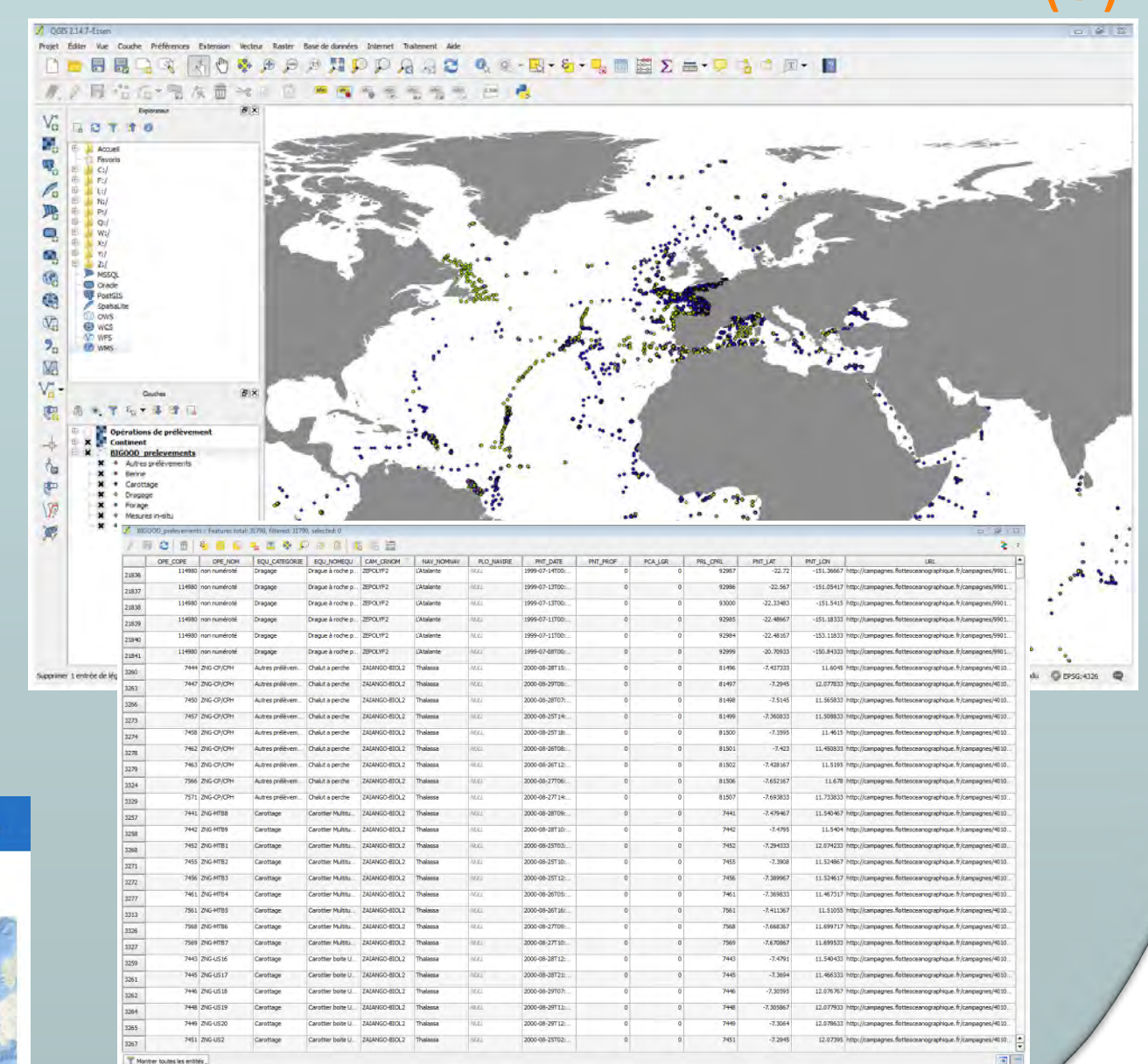
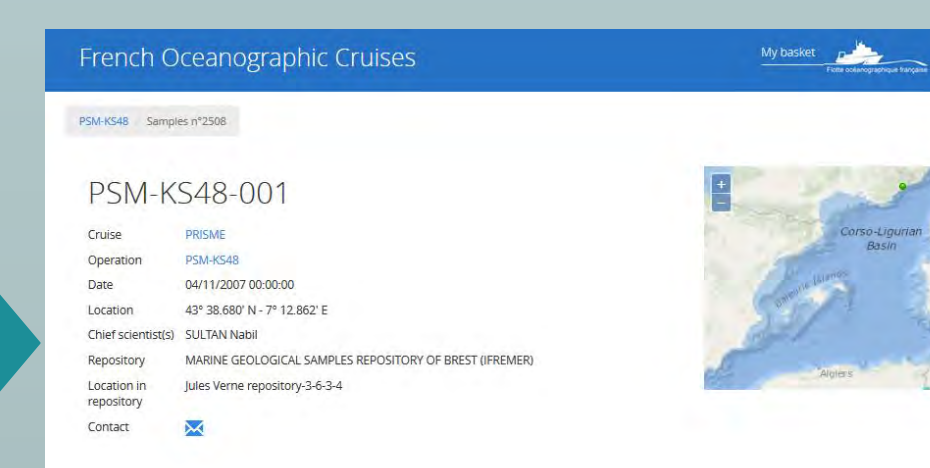
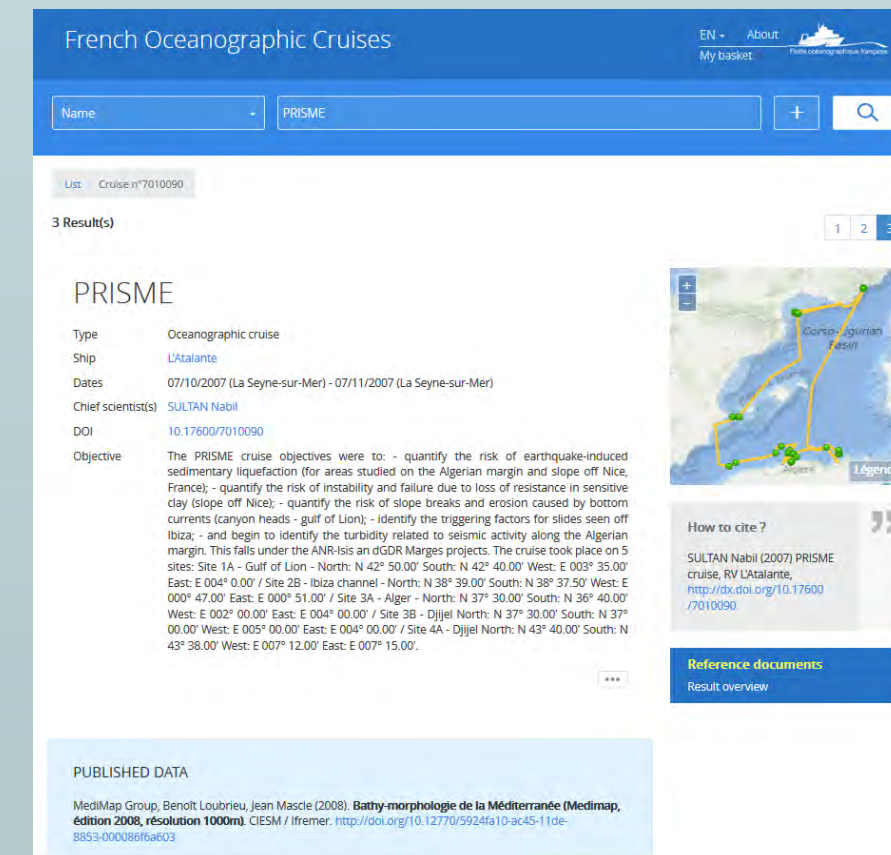
- ❖ Sextant (1) : <http://sextant.ifremer.fr>
- ❖ French oceanographic cruises (2) : <http://campagnes.flotteoceanographique.fr/>
- ❖ Using GIS software (3):
 - WMS <http://www.ifremer.fr/services/wms/sismer>
 - WFS <http://www.ifremer.fr/services/wfs/sismer>
- ❖ Dedicated website « ARCHIMEDE Web » soon available

Layout of repository rooms



Layout of shelves in the core repository
Empty shelves in blue, Shelves with cores in orange

(2) Label with QRCode and bar code



(3)